



MONTHLY MEMBERSHIP PROGRESS REPORT

District 325B1

Results as of: 3/31/2017

GMT: NAZMUL HAQUE

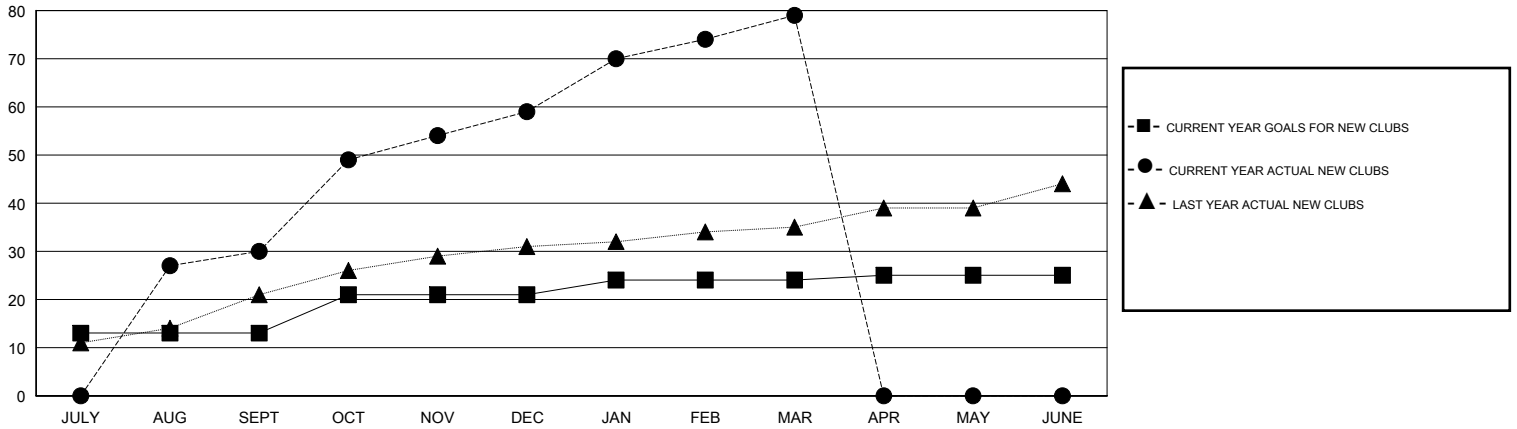
LOCATION NEPAL

GMT CA

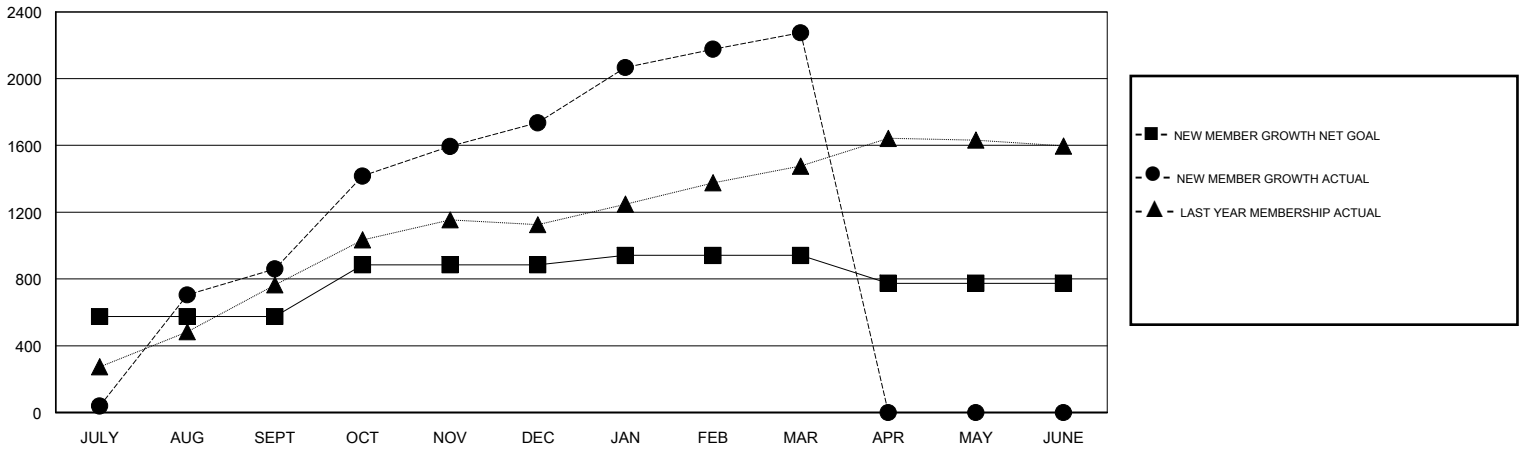
Clubs			
RESULTS FOR 2016-2017			
QUARTER	NEW CLUB GOAL	NEW CLUBS	DROPPED CLUBS
JULY/AUG/SEPT	13	30	0
OCT/NOV/DEC	8	29	0
JAN/FEB/MAR	3	20	0
APR/MAY/JUNE	1	0	0

Members			
RESULTS FOR 2016-2017			
QUARTER	NEW MEMBER GROWTH NET GOAL (not reinstated or transfers)	NEW MEMBER GROWTH ACTUAL (not reinstated or transfers)	DROPPED MEMBERS ACTUAL (including transfers)
JULY/AUG/SEPT	575	1,081	221
OCT/NOV/DEC	310	1,113	237
JAN/FEB/MAR	56	719	180
APR/MAY/JUNE	-167	0	0

GOALS AND ACTUAL NEW CLUBS CUMULATIVE



GOALS AND ACTUAL MEMBERS CUMULATIVE



DROPPED CLUBS: 0	242 CLUBS OF 290 ADDED 1 OR MORE NEW MEMBERS	<u>GENDER DISTRIBUTION</u>	
DROPPED MEMBERS		MALE	6,823 (77.45%)
DECEASED	2	FEMALE	1,986 (22.55%)
CLUB CANCELLED	0	TOTAL FAMILY UNIT MEMBERS	
OTHER	636	5,121	
TOTAL	638	FAMILY MEMBERS PAYING HALF DUES	
		3,201	

[CLICK HERE FOR CUMULATIVE MEMBERSHIP DATA](#)